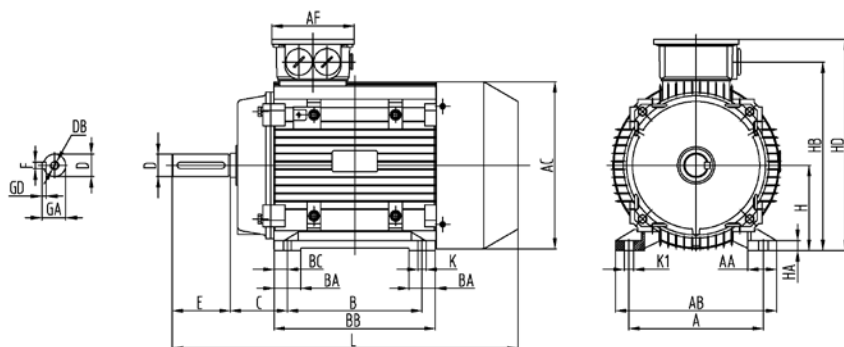


## Dimensions IE2

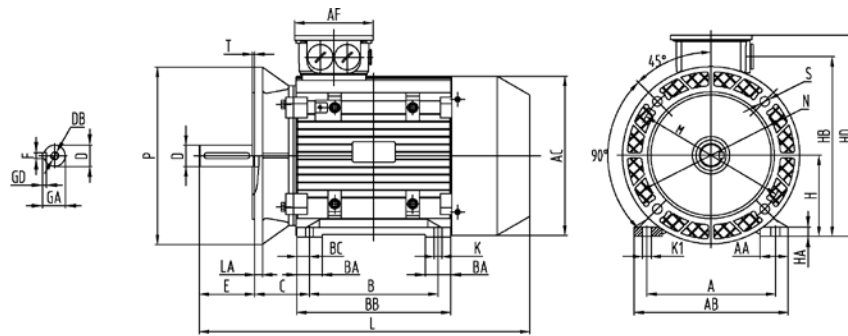
Mounting arrangement IM 1001 (B3)



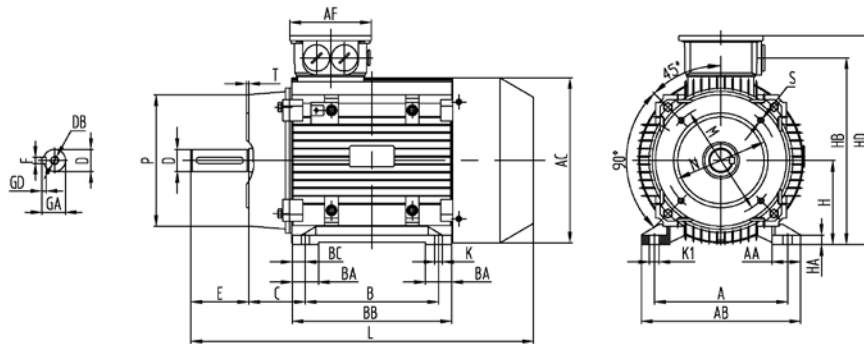
| Type            | Frame size | No. of poles | Dimensions according to IEC [mm] |     |     |     |     |     |      |     |     |     |    |    |    |     |
|-----------------|------------|--------------|----------------------------------|-----|-----|-----|-----|-----|------|-----|-----|-----|----|----|----|-----|
|                 |            |              | H                                | A   | B   | C   | AB  | BB  | BC   | HD  | AC  | HB  | HA | K  | K1 | L   |
|                 |            |              | Dimensions according to DIN [mm] |     |     |     |     |     |      |     |     |     |    |    |    |     |
|                 |            |              | h                                | b   | a   | w1  | f   | e   |      | m1  | g   | v   | c  | s  |    | k   |
| DOR63M1, M2     | 63         | 2...4        | 63                               | 100 | 80  | 40  | 120 | 103 | 11,5 | 171 | 130 | 145 | 7  | 7  | 10 | 220 |
| DOR71M1, M2     | 71         | 2...4        | 71                               | 112 | 90  | 45  | 132 | 105 | 7,5  | 186 | 147 | 160 | 10 | 7  | 10 | 241 |
| DOR80M1, M2     | 80         | 2...6        | 80                               | 125 | 100 | 50  | 160 | 130 | 15   | 213 | 163 | 187 | 10 | 10 | 13 | 290 |
| DOR90S          | 90S        | 2...8        | 90                               | 140 | 100 | 56  | 175 | 130 | 15   | 229 | 183 | 203 | 12 | 10 | 13 | 312 |
| DOR90L          | 90L        | 2...8        | 90                               | 140 | 125 | 56  | 175 | 155 | 15   | 229 | 183 | 203 | 12 | 10 | 13 | 337 |
| DOR100L, L1, L2 | 100L       | 2...8        | 100                              | 160 | 140 | 63  | 198 | 176 | 18   | 252 | 205 | 226 | 14 | 12 | 16 | 369 |
| DOR112M         | 112M       | 2...8        | 112                              | 190 | 140 | 70  | 220 | 180 | 20   | 279 | 229 | 248 | 17 | 12 | 16 | 395 |
| DOR132S, S1, S2 | 132S       | 2...8        | 132                              | 216 | 140 | 89  | 252 | 176 | 18   | 318 | 265 | 287 | 16 | 12 | 16 | 437 |
| DOR132M, M1, M2 | 132M       | 2...8        | 132                              | 216 | 178 | 89  | 252 | 214 | 18   | 318 | 265 | 287 | 16 | 12 | 16 | 475 |
| DOR160M, M1, M2 | 160M       | 2...8        | 160                              | 254 | 210 | 108 | 290 | 294 | 20   | 384 | 325 | 349 | 16 | 15 | 19 | 640 |
| DOR160L         | 160L       | 2...8        | 160                              | 254 | 254 | 108 | 290 | 394 | 20   | 384 | 325 | 349 | 16 | 15 | 19 | 640 |

| Type            | Frame size | No. of poles | Dimensions according to IEC [mm] |      |    |     |    |    |       |     |
|-----------------|------------|--------------|----------------------------------|------|----|-----|----|----|-------|-----|
|                 |            |              | AF                               | AA   | D  | E   | F  | GD | GA    | DB  |
|                 |            |              | Dimensions according to DIN [mm] |      |    |     |    |    |       |     |
| <b>IE2</b>      |            |              | n                                | d    | l  | u   |    | t  | d6/d7 |     |
| DOR63M1, M2     | 63         | 2...4        | 94                               | 27,5 | 11 | 23  | 4  | 4  | 12,5  | M4  |
| DOR71M1, M2     | 71         | 2...4        | 94                               | 32   | 14 | 30  | 5  | 5  | 16    | M4  |
| DOR80M1, M2     | 80         | 2...6        | 105                              | 41   | 19 | 40  | 6  | 6  | 21,5  | M6  |
| DOR90S          | 90S        | 2...8        | 105                              | 45,5 | 24 | 50  | 8  | 7  | 27    | M8  |
| DOR90L          | 90L        | 2...8        | 105                              | 35   | 24 | 50  | 8  | 7  | 27    | M8  |
| DOR100L, L1, L2 | 100L       | 2...8        | 105                              | 50   | 28 | 60  | 8  | 7  | 31    | M10 |
| DOR112M         | 112M       | 2...8        | 112                              | 55   | 28 | 60  | 8  | 7  | 31    | M10 |
| DOR132S, S1, S2 | 132S       | 2...8        | 112                              | 58   | 38 | 80  | 10 | 8  | 41    | M12 |
| DOR132M, M1, M2 | 132M       | 2...8        | 112                              | 58   | 38 | 80  | 10 | 8  | 41    | M12 |
| DOR160M, M1, M2 | 160M       | 2...8        | 143                              | 55   | 42 | 110 | 12 | 8  | 45    | M16 |
| DOR160L         | 160L       | 2...8        | 155                              | 55   | 42 | 110 | 12 | 8  | 45    | M16 |

Mounting arrangement IM 2001 (B35), IM 3001 (B5) without feet



Mounting arrangement IM (B34), IM 3601 (B14) without feet



| Type            | Frame size | No. of poles | Flange B5                        |     |     |     |    |                  | Small flange B14 |     |     |     |         | Big flange B14 |     |     |     |         |
|-----------------|------------|--------------|----------------------------------|-----|-----|-----|----|------------------|------------------|-----|-----|-----|---------|----------------|-----|-----|-----|---------|
|                 |            |              | Dimensions according to IEC [mm] |     |     |     |    |                  |                  |     |     |     |         |                |     |     |     |         |
|                 |            |              | M                                | N   | P   | T   | LA | S <sup>1)</sup>  | M                | N   | P   | T   | S       | M              | N   | P   | T   | S       |
|                 |            |              | Dimensions according to DIN [mm] |     |     |     |    |                  |                  |     |     |     |         |                |     |     |     |         |
| <b>IE2</b>      |            |              | e1                               | b1  | a1  | f1  | c1 | s1 <sup>1)</sup> | e1               | b1  | a1  | f1  | s1      | e1             | b1  | a1  | f1  | s1      |
| DOR63M1, M2     | 63         | 2...4        | 115                              | 95  | 140 | 3   | 10 | 4 x M8           | 75               | 60  | 90  | 2,5 | 4 x M5  | 100            | 80  | 120 | 3   | 4 x M6  |
| DOR71M1, M2     | 71         | 2...4        | 130                              | 110 | 160 | 3,5 | 10 | 4 x M8           | 85               | 70  | 105 | 2,5 | 4 x M6  | 115            | 95  | 140 | 3   | 4 x M8  |
| DOR80M1, M2     | 80         | 2...6        | 165                              | 130 | 200 | 3,5 | 12 | 4 x M10          | 100              | 80  | 120 | 3   | 4 x M6  | 130            | 110 | 160 | 3,5 | 4 x M8  |
| DOR90S          | 90S        | 2...8        | 165                              | 130 | 200 | 3,5 | 12 | 4 x M10          | 115              | 95  | 140 | 3   | 4 x M8  | 130            | 110 | 160 | 3,5 | 4 x M8  |
| DOR90L          | 90L        | 2...8        | 165                              | 130 | 200 | 3,5 | 12 | 4 x M10          | 115              | 95  | 140 | 3   | 4 x M8  | 130            | 110 | 160 | 3,5 | 4 x M8  |
| DOR100L, L1, L2 | 100L       | 2...8        | 215                              | 180 | 250 | 4   | 13 | 4 x M12          | 130              | 110 | 160 | 3,5 | 4 x M8  | 165            | 130 | 200 | 3,5 | 4 x M10 |
| DOR112M         | 112M       | 2...8        | 215                              | 180 | 250 | 4   | 14 | 4 x M12          | 130              | 110 | 160 | 3,5 | 4 x M8  | 165            | 130 | 200 | 3,5 | 4 x M10 |
| DOR132S, S1, S2 | 132S       | 2...8        | 265                              | 230 | 300 | 4   | 14 | 4 x M12          | 165              | 130 | 200 | 3,5 | 4 x M10 | 215            | 180 | 250 | 4   | 4 x M12 |
| DOR132M, M1, M2 | 132M       | 2...8        | 265                              | 230 | 300 | 4   | 14 | 4 x M12          | 165              | 130 | 200 | 3,5 | 4 x M10 | 215            | 180 | 250 | 4   | 4 x M12 |
| DOR160M, M1, M2 | 160M       | 2...8        | 300                              | 250 | 350 | 5   | 15 | 4 x M16          | -                | -   | -   | -   | -       | -              | -   | -   | -   | -       |
| DOR160L         | 160L       | 2...8        | 300                              | 250 | 350 | 5   | 15 | 4 x M16          | -                | -   | -   | -   | -       | -              | -   | -   | -   | -       |

<sup>1)</sup> Through hole, suitable for screws