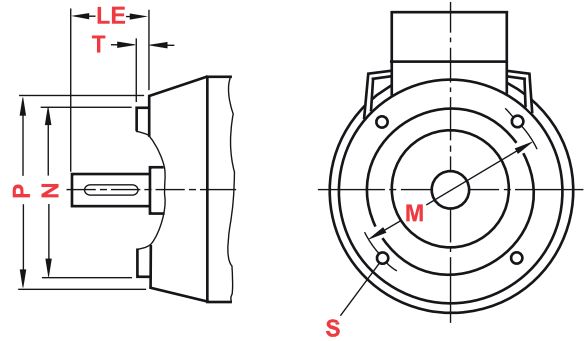
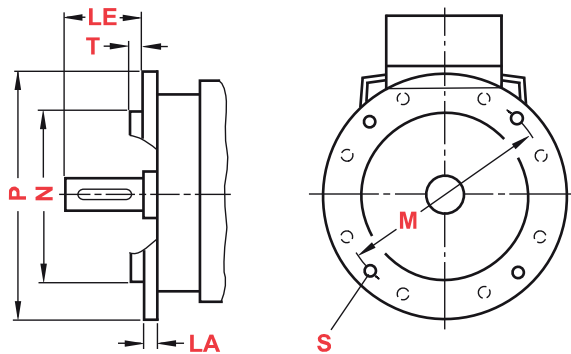


Flange Dimensions

Motor Series 1TZ9, 1TZ5

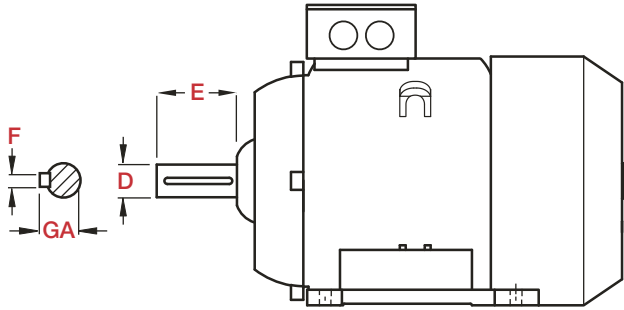


IEC	Type	B5 Flange					
		M	N	P	LA	S	T
63	M	115	95	140	5	4xØ10	3
71	M	130	110	160	5	4xØ10	3,5
80	M	165	130	200	10	4xØ12	3,5
90	S/L	165	130	200	10	4xØ12	3,5
100	L	215	180	250	11	4xØ14,5	4
112	M	215	180	250	11	4xØ14,5	4
132	S/M	265	230	300	12	4xØ14,5	4
160	M/L	300	250	350	13	4xØ18,5	5
180	M/L	300	250	350	13	4xØ18,5	5
200	L	350	300	400	15	4xØ18,5	5
225	S/M	400	350	450	16	8xØ18,5	5
250	M	500	450	550	18	8xØ18,5	5
280	S/M	500	450	550	18	8xØ22	5
315	S/M/L	600	550	660	22	8xØ22	6
315	L for 1TZ5	740	680	800	25	8xØ24	6
355	M/L for 1TZ5	840	780	900	25	8xØ24	6

IEC	Type	B14A Flange				
		M	N	P	S	T
63	M	75	60	90	M6	2,5
71	M	85	70	105	M6	2,5
80	M	100	80	120	M6	3
90	S/L	115	95	140	M8	3
100	L	130	110	160	M8	3,5
112	M	130	110	160	M8	3,5
132	S/M	165	130	200	M10	3,5
160	M/L	215	180	250	M12	4
B14B Flange						
63	M	100	80	120	M6	3
71	M	115	95	140	M8	3
80	M	130	110	160	M8	3,5
90	S/L	130	110	160	M8	3,5
100	L	165	130	200	M10	3,5
112	M	165	130	200	M10	3,5

Shaft Dimensions

Motor Series 1TZ9, 1TZ5

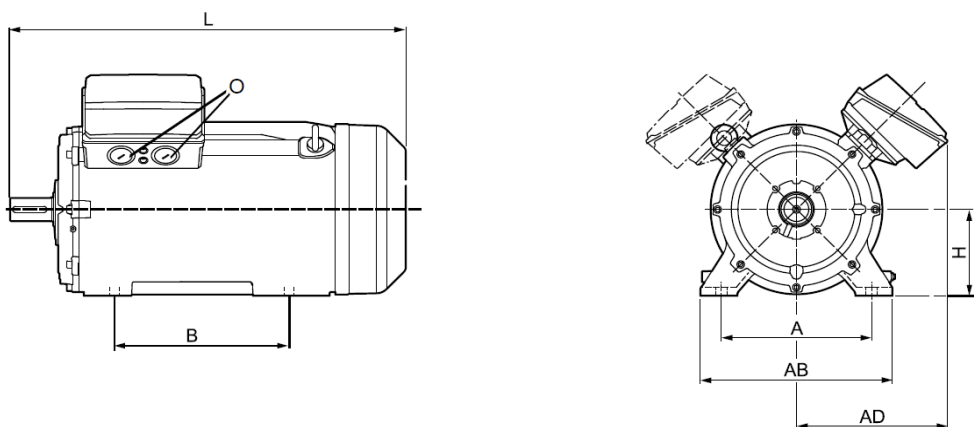


Note: Complete Drawings on request

IEC	Type	Shaft			
	1TZ9 & 1TZ5 (IEC 355)	D	E	F	GA
63	ALL	11	23	4	12,5
71	ALL	14	30	5	16
80	ALL	19	40	6	21,5
90	ALL	24	50	8	27
100	ALL	28	60	8	31
112	ALL	28	60	8	31
132	ALL	38	80	10	41
160	ALL	42	110	12	45
180	ALL	48	110	14	52
200	ALL	55	110	16	59
225	225M-2,	55	110	16	59
	225S-4, 225S-8, 225M-4, 225M-6, , 225M-8,	60	140	18	64
250	250M-2,	60	140	18	64
	250S-4, 250M-4, 250M-6, 250M-4, 250M-8,	65	140	18	69
280	280S-2, 280M-2	65	140	18	69
	280S-4, 280S-6, 280M-4, 280M-6,	75	140	20	79,5
315	315S-2, 315M-2, 315L-2,	65	140	18	69
	315S-4, 315S-6, 315S-8, 315M-4, 315M-6, 315M-8, 315L-4, 315L-6, 315L-8,	80	170	22	85
355	355M-2, 355L-2,	75	140	20	79,5
	355M-4, 355M-6, 355M-8, 355L-4, 355L-6, 355L-8,	95	170	25	100

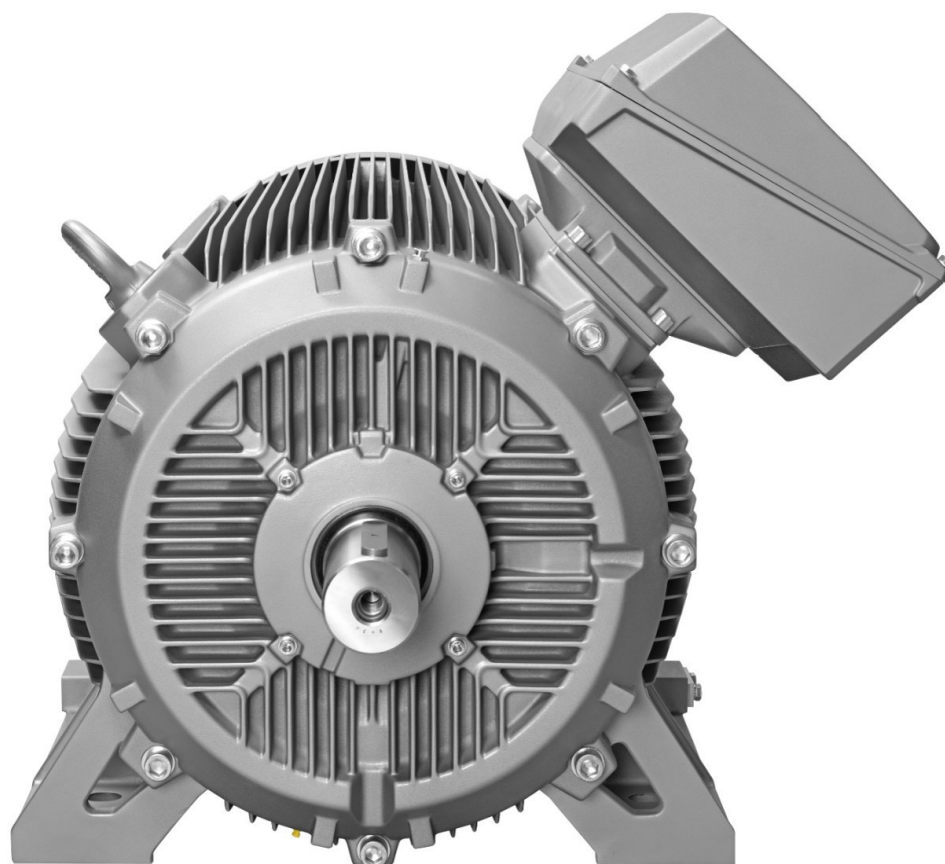
Motor Dimensions

Motor Series 1TZ5 IE3, IE4



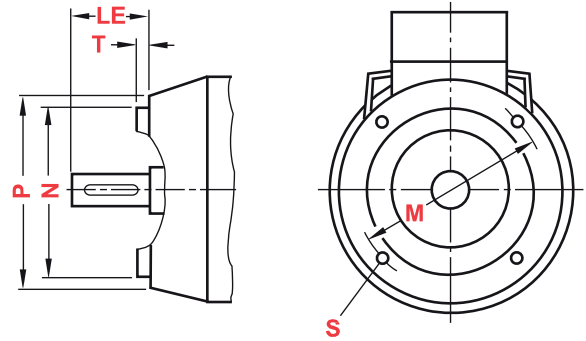
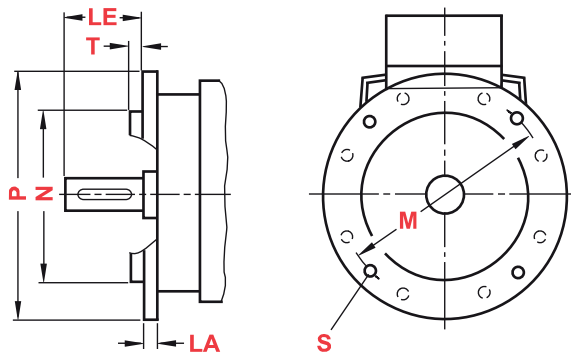
IEC	Type	L	AD	H	AB	B	A	O
315L-2 Inc output	Cast Iron	1282, 1362*	590	315	610	630	508	2xM63x1,5
315L-4 Inc output	Cast Iron	1312, 1422*	59	315	610	630	508	2xM63x1,5
315L-6 Inc output	Cast Iron	1512	542, 590*	315	610	630	508	2xM63x1,5
315L-8 Inc output	Cast Iron	1422, 1512*	543	315	610	630	508	2xM63x1,5
355L-2	Cast Iron	1577	620	355	780	800	610	2xM63x1,5
355L-4, 355L-6, 355L-8	Cast Iron	1607	620	355	780	800	610	2xM63x1,5

* Several variants exists, for detailed dimensional drawings please contact local Rubix office



Flange Dimensions

Motor Series 1TZ9, 1TZ5

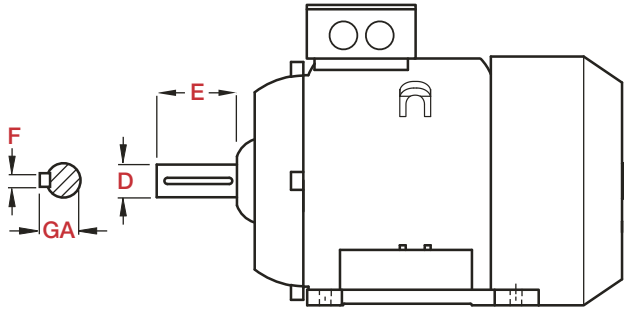


IEC	Type	B5 Flange					
		M	N	P	LA	S	T
63	M	115	95	140	5	4xØ10	3
71	M	130	110	160	5	4xØ10	3,5
80	M	165	130	200	10	4xØ12	3,5
90	S/L	165	130	200	10	4xØ12	3,5
100	L	215	180	250	11	4xØ14,5	4
112	M	215	180	250	11	4xØ14,5	4
132	S/M	265	230	300	12	4xØ14,5	4
160	M/L	300	250	350	13	4xØ18,5	5
180	M/L	300	250	350	13	4xØ18,5	5
200	L	350	300	400	15	4xØ18,5	5
225	S/M	400	350	450	16	8xØ18,5	5
250	M	500	450	550	18	8xØ18,5	5
280	S/M	500	450	550	18	8xØ22	5
315	S/M/L	600	550	660	22	8xØ22	6
315	L for 1TZ5	740	680	800	25	8xØ24	6
355	M/L for 1TZ5	840	780	900	25	8xØ24	6

IEC	Type	B14A Flange				
		M	N	P	S	T
63	M	75	60	90	M6	2,5
71	M	85	70	105	M6	2,5
80	M	100	80	120	M6	3
90	S/L	115	95	140	M8	3
100	L	130	110	160	M8	3,5
112	M	130	110	160	M8	3,5
132	S/M	165	130	200	M10	3,5
160	M/L	215	180	250	M12	4
B14B Flange						
63	M	100	80	120	M6	3
71	M	115	95	140	M8	3
80	M	130	110	160	M8	3,5
90	S/L	130	110	160	M8	3,5
100	L	165	130	200	M10	3,5
112	M	165	130	200	M10	3,5

Shaft Dimensions

Motor Series 1TZ9, 1TZ5

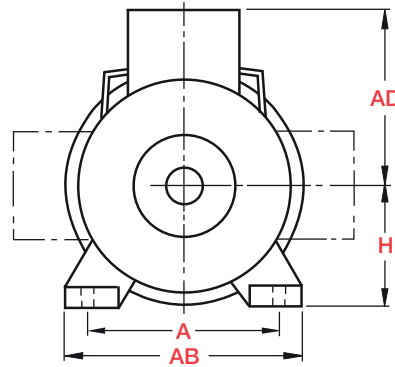
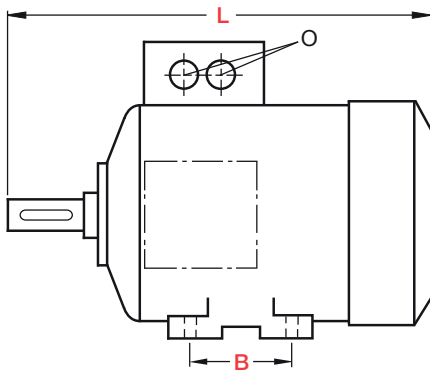


Note: Complete Drawings on request

IEC	Type	Shaft			
	1TZ9 & 1TZ5 (IEC 355)	D	E	F	GA
63	ALL	11	23	4	12,5
71	ALL	14	30	5	16
80	ALL	19	40	6	21,5
90	ALL	24	50	8	27
100	ALL	28	60	8	31
112	ALL	28	60	8	31
132	ALL	38	80	10	41
160	ALL	42	110	12	45
180	ALL	48	110	14	52
200	ALL	55	110	16	59
225	225M-2,	55	110	16	59
	225S-4, 225S-8, 225M-4, 225M-6, , 225M-8,	60	140	18	64
250	250M-2,	60	140	18	64
	250S-4, 250M-4, 250M-6, 250M-4, 250M-8,	65	140	18	69
280	280S-2, 280M-2	65	140	18	69
	280S-4, 280S-6, 280M-4, 280M-6,	75	140	20	79,5
315	315S-2, 315M-2, 315L-2,	65	140	18	69
	315S-4, 315S-6, 315S-8, 315M-4, 315M-6, 315M-8, 315L-4, 315L-6, 315L-8,	80	170	22	85
355	355M-2, 355L-2,	75	140	20	79,5
	355M-4, 355M-6, 355M-8, 355L-4, 355L-6, 355L-8,	95	170	25	100

Motor Dimensions

Motor Series 1TZ9 IE1, IE2



IEC	Type							
		L	AD	H	AB	B	A	O
63M	Aluminium	202,5, 228,5*	101	63	120	80	100	1xM25x1,5
71M	Aluminium	240	111	71	132	90	112	1xM25x1,5
71M	Cast Iron	240	149	71	132	90	112	1xM25x1,5
80M	Aluminium	292	121,5	80	150	100	125	1xM25x1,5
80M Inc output	Aluminium	327	121,5	80	150	100	125	1xM25x1,5
80M	Cast Iron	292	159	80	150	100	125	1xM25x1,5
90S / 90L	Aluminium	347	126	90	165	100	140	1xM25x1,5
90L Inc output	Aluminium	387	126	90	165	125	140	1xM25x1,5
90S	Cast Iron	347	164	90	165	100	140	1xM25x1,5
90L	Cast Iron	347	164	90	165	125	140	1xM25x1,5
100L	Aluminium	395,5	166	100	196	140	160	2xM32x1,5
100L Inc output	Aluminium	430,5	166	100	196	140	160	2xM32x1,5
100L	Cast Iron	397,5	193	100	196	140	160	2xM32x1,5
112M	Aluminium	389, 414*	177	112	226	140	190	2xM32x1,5
112M Inc output	Aluminium	414	177	112	226	140	190	2xM32x1,5
112M-2, 112M-4, 112M-6	Cast Iron	390,5	195	112	226	140	190	2xM32x1,5
112M-8	Cast Iron	415,5	195	112	226	140	190	2xM32x1,5
132S	Aluminium	465	202	132	256	140	216	2xM32x1,5
132S	Cast Iron	466,5	214,5	132	256	140	216	2xM32x1,5
132M	Aluminium	465	202	132	256	178	216	2xM32x1,5
132M Inc output	Aluminium	515	202	132	256	178	216	2xM32x1,5
132M	Cast Iron	466,5	214,5	132	256	178	216	2xM32x1,5
160M	Aluminium	604	236,5	160	300	210	254	2xM40x1,5
160M	Cast Iron	606	265	160	300	210	254	2xM40x1,5
160L	Aluminium	604	236,5	160	300	254	254	2xM40x1,5
160L	Cast Iron	606	265	160	300	254	254	2xM40x1,5
160L Inc output	Cast Iron	664	236,5	160	300	254	254	2xM40x1,5
180M	Aluminium	698	259	180	339	241	279	2xM40x1,5
180M-2, 180M-4	Cast Iron	668	286	180	339	241	279	2xM40x1,5
180L	Aluminium	698	259	180	339	279	279	2xM40x1,5
180L Inc output	Aluminium	698	259	180	339	279	279	2xM40x1,5
180L-4	Cast Iron	698	286	180	339	279	279	2xM40x1,5
180L-6	Cast Iron	668	286	180	339	241	279	2xM40x1,5
180L Inc output	Cast Iron	698	286	180	339	279	279	2xM40x1,5
200L	Aluminium	746	296	200	378	305	318	2xM50x1,5
200L Inc output	Aluminium	746	296	200	378	305	318	2xM50x1,5
200L	Cast Iron	721	315	200	378	305	318	2xM50x1,5

Motor Dimensions

Motor Series 1TZ9 IE1, IE2

IEC	Type							
		L	AD	H	AB	B	A	O
200L Inc output	Cast Iron	746	315	200	378	305	318	2xM50x1,5
225S-4, 225S-8	Cast Iron	788	338	225	436	311	356	2xM50x1,5
225M-2	Cast Iron	818	338	225	436	311	356	2xM50x1,5
225M-4, 225M-6, 225M-8	Cast Iron	848	338	225	436	311	356	2xM50x1,5
225M-2 Inc output	Cast Iron	818	338	225	436	311	356	2xM50x1,5
225M-4 Inc out, 225M-6 Inc out, 225M-8 Inc out	Cast Iron	848	338	225	436	311	356	2xM50x1,5
250M	Cast Iron	887	410	250	490	349	406	2xM63x1,5
250M-2 Inc out, 250M-6 Inc out, 250M-8 Inc out	Cast Iron	887	410	250	490	349	406	2xM63x1,5
250M-4 Inc output	Cast Iron	957	410	250	490	349	406	2xM63x1,5
280S	Cast Iron	960	433	280	540	368	457	2xM63x1,5
280M	Cast Iron	960	515	280	540	419	508	2xM63x1,5
280M-6 Inc output, 280M-8 Inc output	Cast Iron	960	515	280	540	419	508	2xM63x1,5
280M-2 Inc output, 280M-4 Inc output	Cast Iron	1070	515	280	540	419	508	2xM63x1,5
315S-2	Cast Iron	1082	515	315	610	406	508	2xM63x1,5
315S-4, 315S-6, 315S-8	Cast Iron	1052	515	315	610	406	508	2xM63x1,5
315M-2	Cast Iron	1217	515	315	610	457	508	2xM63x1,5
315M-4	Cast Iron	1247	515	315	610	457	508	2xM63x1,5
315M-6, 315M-8	Cast Iron	1082	515	315	610	457	508	2xM63x1,5
315L-2	Cast Iron	1217	515	315	610	508	508	2xM63x1,5
315L-4, 315L-6, 315L-8	Cast Iron	1247, 1402*	515	315	610	508	508	2xM63x1,5
315L-2 Inc output	Cast Iron	1372	515	315	610	508	508	2xM63x1,5
315L-6 Inc output	Cast Iron	1402	515	315	610	508	508	2xM63x1,5
315L-8 Inc output	Cast Iron	1247	515	315	610	508	508	2xM63x1,5

* Several variants exists, for detailed dimensional drawings please contact local Rubix office



Motor Dimensions

Motor Series 1TZ9 IE3

IEC	Type	L	AD	H	AB	B	A	O
	80M	Aluminium	292, 327*	121,5	80	150	100	125
80M	Cast Iron	292, 327*	159	80	150	100	125	1xM25x1,5
90S	Aluminium	347	126	90	165	100	140	1xM25x1,5
90L	Aluminium	387	126	90	165	125	140	1xM25x1,5
90S	Cast Iron	347	164	90	165	100	140	1xM25x1,5
90L	Cast Iron	387	164	90	165	125	140	1xM25x1,5
100L	Aluminium	470,5	166	100	196	140	160	2xM32x1,5
100L-2, 100L-4	Cast Iron	432,5	193	100	196	140	160	2xM32x1,5
100L-6	Cast Iron	397	193	100	196	140	160	2xM32x1,5
112M	Aluminium	459	177	112	226	140	190	2xM32x1,5
112M	Cast Iron	415,5	195	112	226	140	190	2xM32x1,5
132S	Aluminium	515	202	132	256	140	216	2xM32x1,5
132S	Cast Iron	466,5, 516,5*	214,5	132	256	140	216	2xM32x1,5
132M	Aluminium	515	202	132	256	178	216	2xM32x1,5
132M Inc output	Aluminium	515	202	132	256	178	216	2xM32x1,5
132M-6	Cast Iron	466,5	214,5	132	256	178	216	2xM32x1,5
132M-4, 132M-6, 132M-8	Cast Iron	516,5	214,5	132	256	178	216	2xM32x1,5
132M-4 Inc out	Cast Iron	567,5	214,5	132	256	178	216	2xM32x1,5
160M	Aluminium	604	236,5	160	300	210	254	2xM40x1,5
160M	Cast Iron	606	261	160	300	210	254	2xM40x1,5
160L	Aluminium	664	236,5	160	300	254	254	2xM40x1,5
160L Inc output	Aluminium	664	236,5	160	300	254	254	2xM40x1,5
160L	Cast Iron	666	261	160	300	254	254	2xM40x1,5
180M	Aluminium	698	259	180	339	241	279	2xM40x1,5
180L	Aluminium	698	259	180	339	279	279	2xM40x1,5
180L Inc output	Aluminium	698	259	180	339	279	279	2xM40x1,6
180M-2	Cast Iron	698	286	180	339	241	279	2xM40x1,5
180M-4	Cast Iron	668	286	180	339	241	279	2xM40x1,5
180L-4, 180L-8	Cast Iron	698	286	180	339	241	279	2xM40x1,5
180L-6	Cast Iron	668	286	180	339	241	279	2xM40x1,5
200L	Aluminium	746	296	200	378	305	318	2xM50x1,5
200L Inc output	Aluminium	746	296	200	378	305	318	2xM50x1,5
200L	Cast Iron	721, 746*	315	200	378	305	318	2xM50x1,5
225S-4, 225S-8	Cast Iron	788	338	225	436	286	356	2xM50x1,5
225M-2	Cast Iron	818	338	225	436	311	356	2xM50x1,5
225M-4, 225M-6, 225M-8	Cast Iron	848	338	225	436	311	356	2xM50x1,5
250M	Cast Iron	887	410	250	490	349	406	2xM63x1,5
280S	Cast Iron	960	433	280	540	368	457	2xM63x1,5
280M-2, 280M-4	Cast Iron	1070	433	280	540	419	457	2xM63x1,5
280M-6, 280M-8	Cast Iron	960	433	280	540	419	457	2xM63x1,5
315S-2	Cast Iron	1052	515	315	610	406	508	2xM63x1,5
315S-4, 315S-6, 315S-8	Cast Iron	1082	515	315	610	406	508	2xM63x1,5
315M-2	Cast Iron	1217	515	315	610	457	508	2xM63x1,5
315M-4, 315M-6, 315M-8	Cast Iron	1247	515	315	610	457	508	2xM63x1,5
315L-2	Cast Iron	1217, 1372*	515	315	610	508	508	2xM63x1,5
315L-4, 315L-6, 315L-8	Cast Iron	1247, 1402*	515	315	610	508	508	2xM63x1,5
315L-6 Inc out, 315L-8 Inc out	Cast Iron	1402	515	315	610	508	508	2xM63x1,5

* Several variants exists, for detailed dimensional drawings please contact local Rubix office

Motor Dimensions

Motor Series 1TZ9 IE4

IEC	Type	L	AD	H	AB	B	A	O
	100L-2	Aluminium	430,5	166	100	196	140	160
100L-4	Aluminium	480,5	166	100	196	140	160	2xM32x1,5
100L-2	Cast Iron	432,5	193	100	196	140	160	2xM32x1,5
100L-4	Cast Iron	482,5	193	100	196	140	160	2xM32x1,5
112M-2	Aluminium	414	177	112	226	140	190	2xM32x1,5
112M-4	Aluminium	464	177	112	226	140	190	2xM32x1,5
112M-2	Cast Iron	415,5	195	112	226	140	190	2xM32x1,5
112M-4	Cast Iron	465,5	195	112	226	140	190	2xM32x1,5
132S-2	Aluminium	465, 515*	202	132	256	140	216	2xM32x1,5
132S-4	Aluminium	515	202	132	256	140	216	2xM32x1,5
132S-2	Cast Iron	466,5, 516,5*	214,5	132	256	140	216	2xM32x1,5
132S-4	Cast Iron	516,5	214,5	132	256	140	216	2xM32x1,5
132M	Aluminium	515	202	132	256	178	216	2xM32x1,5
132M	Cast Iron	516,5	214,5	132	256	178	216	2xM32x1,5
160M-2	Aluminium	604, 664*	236,5	160	300	210	254	2xM40x1,5
160M-4	Aluminium	664	236,5	160	300	210	254	2xM40x1,5
160M-2	Cast Iron	606, 666*	261	160	300	210	254	2xM40x1,5
160M-4	Cast Iron	666	261	160	300	210	254	2xM40x1,5
160L	Aluminium	664	236,5	160	300	254	254	2xM40x1,5
160L	Cast Iron	666	261	160	300	254	254	2xM40x1,5
180M	Aluminium	698	259	180	339	241	279	2xM40x1,5
180M-2	Cast Iron	698	286	180	339	279	279	2xM40x1,5
180M-4	Cast Iron	668, 698*	286	180	339	279	279	2xM40x1,5
180L	Aluminium	698	259	180	339	279	279	2xM40x1,5
180L	Cast Iron	698	286	180	339	279	279	2xM40x1,5
200L	Aluminium	746	296	200	378	305	318	2xM50x1,5
200L	Cast Iron	746	315	200	378	305	318	2xM50x1,5
225S	Cast Iron	848	338	225	436	286	356	2xM50x1,5
225M-2	Cast Iron	818	338	225	436	311	356	2xM50x1,5
225M-4	Cast Iron	928	338	225	436	311	356	2xM50x1,5
250M-2	Cast Iron	887	410	250	490	349	406	2xM63x1,5
250M-4	Cast Iron	957	410	250	490	349	406	2xM63x1,5
280S	Cast Iron	1070	433	280	540	368	457	2xM63x1,5
280M	Cast Iron	1070	433	280	540	419	457	2xM63x1,5
315S	Cast Iron	1052	515	315	610	406	508	2xM63x1,5
315M-2	Cast Iron	1217	515	315	610	457	508	2xM63x1,5
315M-4	Cast Iron	1247	515	315	610	457	508	2xM63x1,5
315L-2	Cast Iron	1217, 1372*	515	315	610	508	508	2xM63x1,5
315L-4	Cast Iron	1402	515	315	610	508	508	2xM63x1,5

* Several variants exists, for detailed dimensional drawings please contact local Rubix office