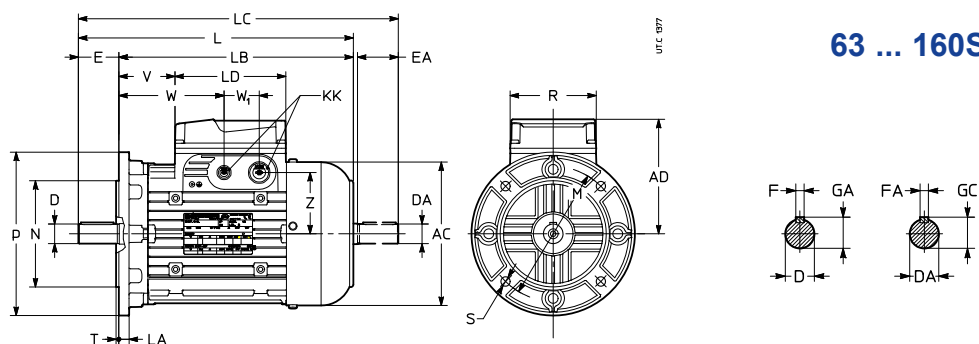


## 3.8

### Motor dimensions

Mounting position  
IM B5, IM B5R, IM B5...



63 ... 160S

Motor size	Shaft end															Flange																	
	AC	AD	L	LB	LC	LD	KK	R	V	W	W <sub>1</sub>	Z	D	1)	E	F	GA	M	N	P	LA	S	T										
	∅						2)						∅		h9		∅	∅	∅	∅													
63	B5R	123	95	226	206	251	103	4×M16	86	46	86	36	45	9	j6	M3	20	3	10,2	100	80	j6	120	8	7	3							
	B5A			229	257									11	j6	M4	23	4	12,5	115	95	j6	140	10	9								
	B5			212	189									240	29	69	11 <sup>3)</sup>	j6	M4	23 <sup>3)</sup>	12,5	130	110	j6	160			3,5					
	BX1																																
71	B5B	138	112	258	235	287	2×M16 + 2×M20	66	106	62	11	j6	M4	23	5	16	12,5	100	80	j6	120	8	7	3									
	B5R			265	301													14	j6	M5	30	5	16	115	95	j6	140	10	9				
	B5A			246	216													282	47	87	11 <sup>3)</sup>	j6	M4	23 <sup>3)</sup>	4	12,5	130	110	j6	160			3,5
	B5			239	268													14 <sup>3)</sup>	j6	M5	30 <sup>3)</sup>	5	16	165	130	j6	200	12	11				
	BX2			246	282																												
	BX5																																
BX1																																	
80	B5B	156	121	284	254	321	80	120	71	14	j6	M5	30	6	21,5	165	115	95	j6	140	10	9	3										
	B5R			294	341												19	j6	M6	40	6	21,5	130	110	j6	160			3,5				
	B5A			273	320												14 <sup>3)</sup>	j6	M5	30 <sup>3)</sup>	5	16	165	130	j6	200	12	11					
	B5			263	300																												
90 S <sup>4)</sup>	B5S	176	141	308	278	345	136	2×M16 + 2×M25	106	60	120	43	75	14	j6	M5	30			130	110	j6	160	10	9								
	B5B			318	365									19	j6	M6	40	6	21,5	165	130	j6	200	12	11								
	B5R			297	344									24	j6	M8	50	8	27														
	B5			307	364																												
90 L	B5S			338	308	375				90	150			14	j6	M5	30	5	16	130	110	j6	160	10	9								
	B5B			348	395									19	j6	M6	40	6	21,5	165	130	j6	200	12	11								
	B5R			327	374									24	j6	M8	50	8	27														
	B5			337	394																												
100	B5C	194	151	377	337	425				109	169			19	j6	M6	40	6	21,5	130	110	j6	160	10	9								
	B5S			387	445									24	j6	M8	50	8	27	165	130	j6	200	12	11								
	B5R			397	465									28	j6	M10	60		31														
	B5A			370	310									438	82	142																	
B5																																	
112	B5S	218	163	402	362	451				126	186			19	j6	M6	40	6	21,5	165	130	j6	200	12	11	3,5							
	B5R			412	471									24	j6	M8	50	8	27														
	B5A			422	491									28	j6	M10	60		31														
	B5			396	336									465	100	160																	
132 S, M <sup>5)</sup>	B5S	257	194	470	420	529	190	2×M16 + 2×M32	148	113	201	55	109	24	j6	M8	50		27	165	130	j6	200	12	11	3,5							
	B5B			480	549									28	j6	M10	60		31	215	180	j6	250	14	14	4							
	B5R			500	589									38	k6	M12	80	10	41	265	230	j6	300										
	B5A			465	385									554	78	166																	
	B5																																
132 MA <sup>7)</sup> ... MC	B5S			530	480	589				173	261			24	j6	M8	50	8	27	165	130	j6	200	12	11	3,5							
	B5B			540	609									28	j6	M10	60		31	215	180	j6	250	14	14	4							
	B5R			560	649									38	k6	M12	80	10	41	265	230	j6	300										
	B5A			525	445									614	138	226																	
	B5																																
160 S	B5			574	464	663								42	k6	M16 <sup>6)</sup>	110 <sup>6)</sup>	12 <sup>6)</sup>	45 <sup>6)</sup>	300	250	h6	350	15	18	5							

1) Tapped butt-end hole.

2) Prearranged for cable entry knockout openings on both sides (two openings on each side).

3) Shaft end not according to standard.

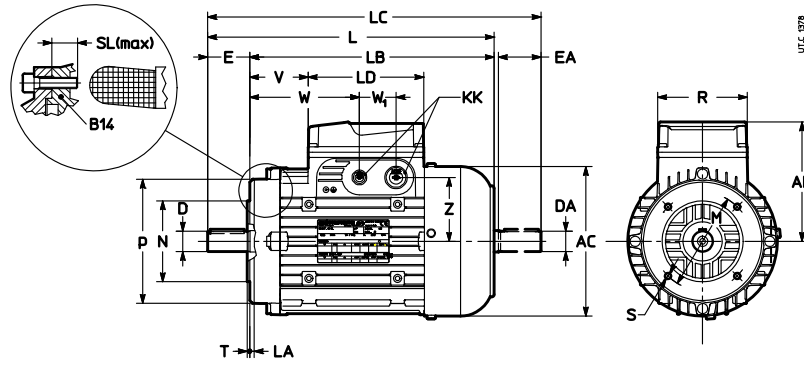
4) For motor HB3 90S 2, HB3 90S 4 dimensions are the ones as size 90L.

5) For motor HB3 132SB 2, HB3 132SC 2, HB3 132 S 4, HB3 132M 4 and HB3 132M 6 dimensions are the ones as size 132 MA ... MC.

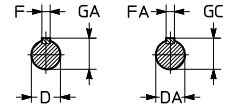
6) The dimensions of second shaft are the same as size 132.

7) For motor HB 132MA 2 dimensions are the ones as size 132S.

Mounting position  
IM B14, IM B14R



63 ... 1322



Motor size	AC	AD	L	LB	LC	LD	KK	R	V	W	W <sub>1</sub>	Z	Shaft end					Flange									
													D DA	<sup>1)</sup> E EA	F FA	GA GC	M	N	P	LA	S	SL	T				
<b>63</b>	<b>B14</b>	123	95	212	189	240	103	4×M16	86	29	69	36	45	11	j6	M4	23	4	12,5	75	60	j6	90	8	M5	10	2,5
<b>71</b>	<b>B14R</b>	138	112	239	216	268	2×M16 + 2×M20		47	87			62	14	j6	M5	30	5	16	85	70	j6	105	8	M6		2,5
	<b>B14</b>			246	282																						
<b>80</b>	<b>B14R</b>	156	121	263	233	300			59	99		71	19	j6	M6	40	6	21,5	100	80	j6	120	8	M6		3	
	<b>B14</b>			273	320																						
<b>90 S<sup>8)</sup></b>	<b>B14</b>	176	141	307	257	364	2×M16 + 2×M25	106	39	99	43	75	24	j6	M8	50	8	27	115	95	j6	140	10	M8	12	3	
<b>90 L</b>	<b>B14</b>			337	287	394																					
<b>100</b>	<b>B14</b>	194	151	370	310	438			82	142		86	28	j6	M10	60	8	31	130	110	j6	160	10	M8	13	3,5	
<b>112</b>	<b>B14</b>	218	163	396	336	465			100	160		98															
<b>132 S, M<sup>9)</sup></b>	<b>B14</b>	257	194	465	385	554	2×M16 + 2×M32	148	78	166	55	153	38	k6	M12	80	10	41	165	130	j6	200	8	M10	18	3,5	
<b>132 MA<sup>10)</sup>... MCB14</b>				525	445	614																					138

1) Tapped butt-end hole.

2) Prearranged for cable entry knockout openings on both sides (two openings on each side).

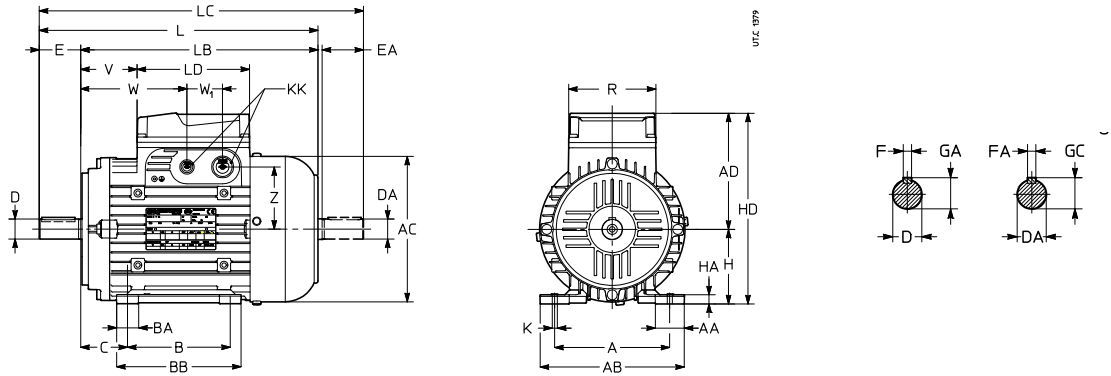
8) For motor **HB3 90S 2** and **HB3 90S 4** dimensions are the ones as size 90L.

9) For motor **HB3 132SB 2**, **HB3 132SC 2**, **HB3 132 S 4**, **HB3 132M 4** and **HB3 132M 6** dimensions are the ones as size 132 MA ... MC.

10) For motor **HB 132MA 2** dimensions are the ones as size 132S.

Mounting position  
IM B3

63 ... 160S



Motor size	AC	AD	L	LB	LC	LD	KK	Shaft end							Feet																					
								R	V	W	W <sub>1</sub>	Y	Z	D	1)	E	F	GA	A	AB	B	C	BB	BA	AA	K	HA	H <sup>7)</sup>	HD							
	∅						2)	R <sub>1</sub>					∅		EA	FA	h <sub>9</sub>																			
<b>63</b>	<b>B3</b>	123	95	212	189	240	103	4×M16	86	29	69	36	-	45	11	j6	M4	23	4	12,5	100	120	80	40	100	21	27	7	9	63	158					
<b>71</b>	<b>B3</b>	138	112	246	216	282		2×M16 + 2×M20		47	87			62	14	j6	M5	30	5	16	112	138	90	45	110	22	28		10	71	183					
<b>80</b>	<b>B3</b>	156	121	273	233	320				59	99			71	19	j6	M6	40	6	21,5	125	152	100	50	125	26		9	80	201						
<b>90 S<sup>9)</sup></b>	<b>B3</b>	176	141	307	257	364	136	2×M16 + 2×M20	106	39	99	43		75	24	j6	M8	50	8	27	140	174		56			35	11	90	230						
<b>90 L</b>	<b>B3</b>			337	287	394				69	129												125	150												
<b>100</b>	<b>B3</b>	194	151	370	310	438				82	142			86	28	j6	M10	60	8	31	160	196	140	63	185	40	37	12	12	100	251					
<b>112</b>	<b>B3</b>	218	163	396	336	465				100	160			98							190	226		70			50	15	112	275						
<b>132 S, M<sup>9)</sup></b>	<b>B3</b>	257	194	465	385	554	190	2×M16 + 2×M32	148	78	166	55	-	109	38	k6	M12	80	10	41	216	257	140 <sup>3)</sup>	89	210	42	52	14	17	132	326					
<b>132 MA<sup>10)</sup> ...MC B3</b>				525	445	614				138	226													178 <sup>3)</sup>												
<b>160 S</b>	<b>B3</b>			574 <sup>4)</sup>	464	663 <sup>4)</sup>				157	245			42	k6	M16 <sup>4)</sup>	110 <sup>4)</sup>	12 <sup>4)</sup>	45 <sup>4)</sup>	254	294	210	108	246	45			20	160	354						

1) Tapped butt-end hole.

2) Prearranged for cable entry knockout openings on both sides (two openings on each side).

3) Shaft end not according to standard.

4) For motor **HB3 90S 2**, **HB3 90S 4** dimensions are the ones as size 90L.

5) For motor **HB3 132SB 2**, **HB3 132SC 2**, **HB3 132 S 4**, **HB3 132M 4** and **HB3 132M 6** dimensions are the ones as size 132 MA ... MC.

6) The dimensions of second shaft are the same as size 132.

7) For motor **HB 132MA 2** dimensions are the ones as size 132S.